

Noël, Noël

♩ = 72

F **Strophe introductive**

B^b

C



4

B^b

F

F

B^b



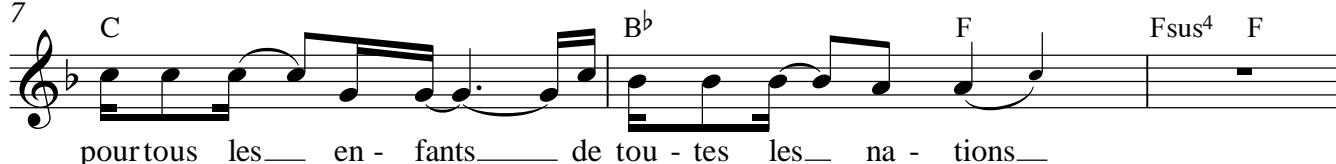
7

C

B^b

F

Fsus⁴ F



10

C

Couplet 1

F

C

F

D-



14

B^b/C

F

Refrain

F



17

B^b

F

C

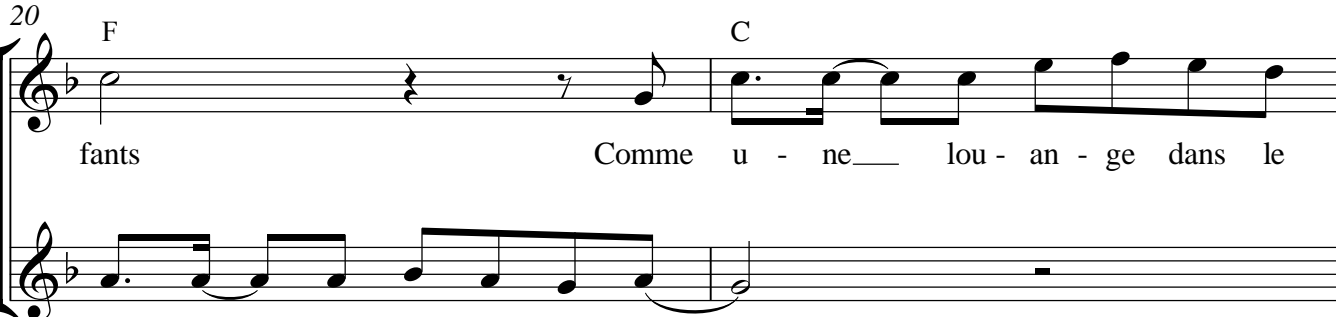
Couplet 2



20

F

C



22

F

D-

B^b/C

C

Au refrain

B^b

Couplet 3

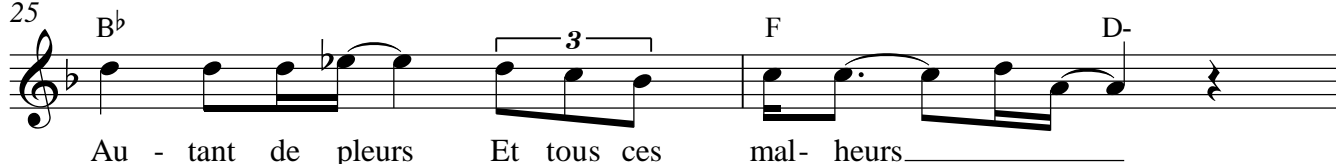


25

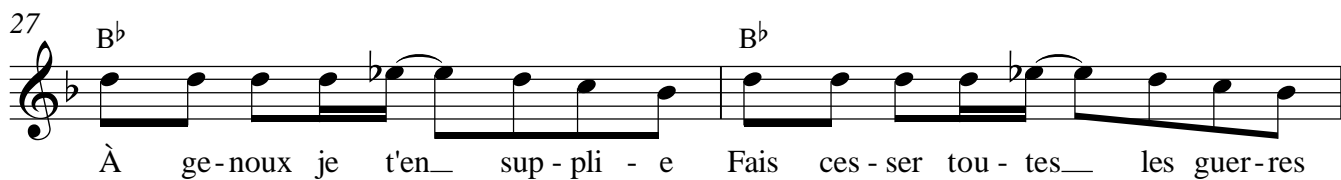
B^b

F

D-

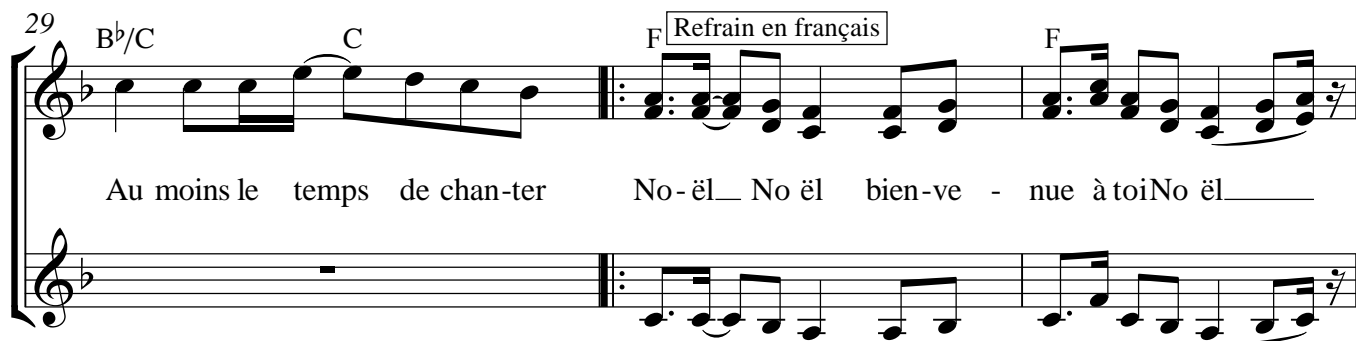


27 B^b B^b



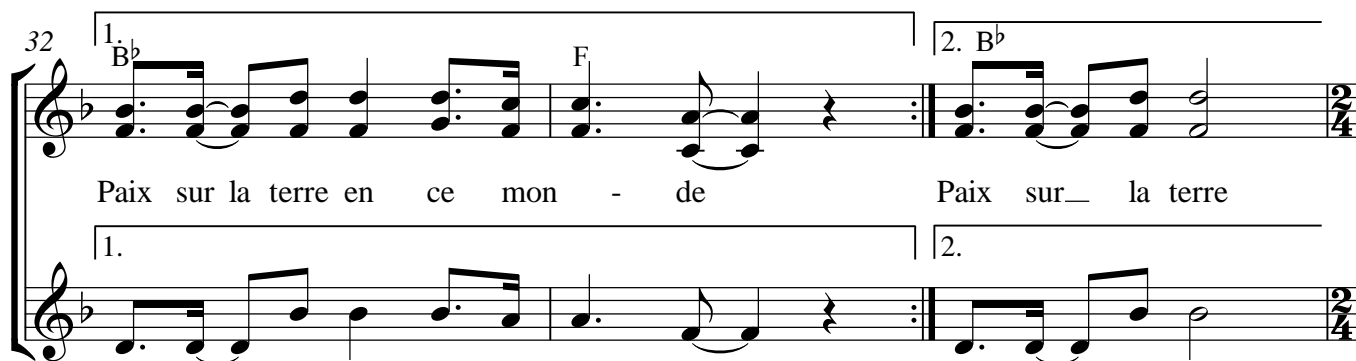
À ge-noux je t'en sup - pli - e Fais ces - ser tou - tes les guer-res

29 B^b/C C F Refrain en français F



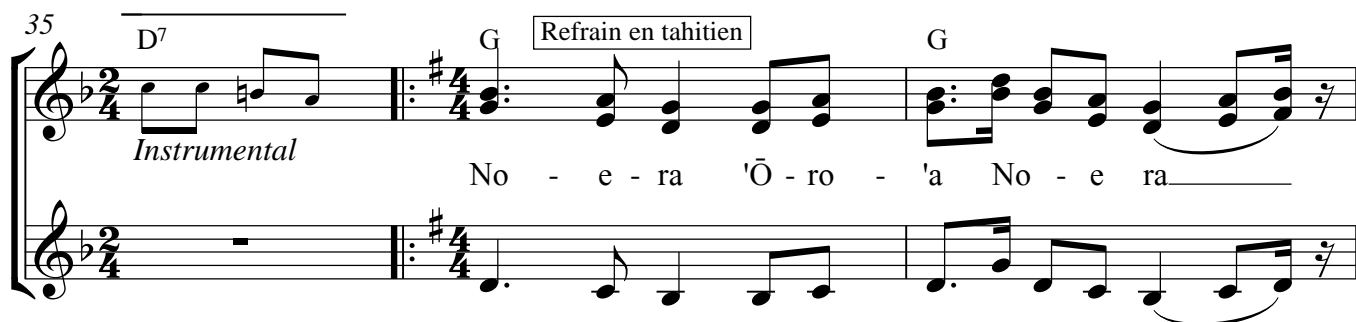
Au moins le temps de chan-ter No-ël No ël bien-ve - nue à toi No ël

32 1. B^b F 2. B^b



Paix sur la terre en ce mon - de Paix sur la terre

35 D⁷ G Refrain en tahitien G



Instrumental No - e - ra 'O - ro - 'a No - e ra

38 C G



Hau i ro - to i tei - e nei ao